

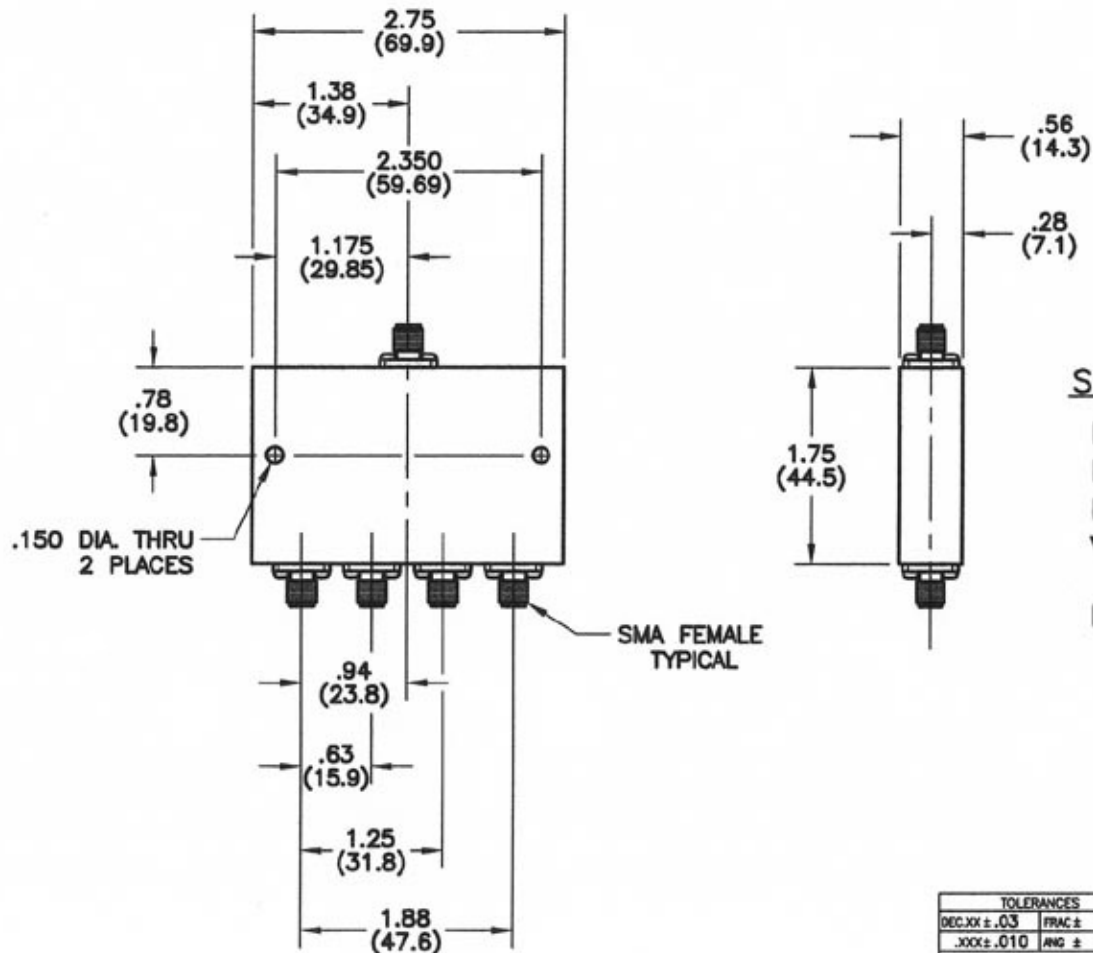
4

3

2

1

REVISIONS				
REV	ZONE	DESCRIPTION	DATE	BY ECO



SPECIFICATIONS

FREQUENCY RANGE: 1.0 TO 3.0 GHz

INSERTION LOSS: 0.6 dB MAX.

ISOLATION: 20 dB MIN.

VSWR: INPUT - 1.40:1 MAX.

OUTPUT - 1.40:1 MAX.

POWER: 30 WATTS AVG. W/ LOAD VSWR 1.20:1 MAX.

DIMENSIONS: INCHES
(MILLIMETERS)

TOLERANCES		THE INFORMATION CONTAINED IN THIS DOCUMENT IS THE PROPERTY OF MICROWAVE DEVICES, INC. AND IS PROPRIETARY. IT IS NOT TO BE COPIED OR USED FOR ANY PURPOSE OTHER THAN AS INSTRUCTED, IN WRITING, BY MICROWAVE DEVICES, INC.	SIGNATURES		DATE
DEC.XX ± .03	FRACTION ±		DR	G.V. Coltrone	2-9-07
.XXX ± .010	ANG ±		CHK		
MATERIAL			APPD		
FINISH			APPD		

Microwave Devices
RF and Microwave Components

OUTLINE, 4-WAY POWER
DIVIDER, MODEL 4PD1.51S

CAGE	SIZE	DRAWING NO.
60674	B	900646-1
DRAWING SCALE 1=1		SHEET 1 OF 1

CONTACT: MICROWAVE DEVICES - 1150 N. GRAHAM RD.
(317) 736-9833 FRANKLIN, IN 46131

DIMENSIONS ARE IN INCHES UNLESS OTHERWISE SPECIFIED.

4

3

2

1